



# LETZTEST WATER CHECKPACK PRO+

## TECHNICAL DATASHEET

A fully equipped water testing backpack for rapid water quality assessment in the first 72 hours of an emergency. Independent of electricity and complex procedures, it enables reliable microbiological and physico-chemical testing directly in the field — in parallel for up to three technicians.

Designed for use by trained laypersons, medical personnel, or health officers as part of an organizational response, it contains all essential tools for sampling, testing, safe waste disposal, clear instructions, data management, and long-lasting consumables.

The LETZTEST Membrane Filtration Set together with the unique LETZTEST Electricity-Free Incubator provide reliable microbiological analysis following DIN EN ISO 9308-1, while the state-of-the-art LETZTEST photometer, including cloud-based data management deliver precise physico-chemical water testing results.

Built for rapid response when water testing cannot wait.

A product of LETZTEST  
Contact: [info@letztest.com](mailto:info@letztest.com)  
Web: [www.letztest.com](http://www.letztest.com)

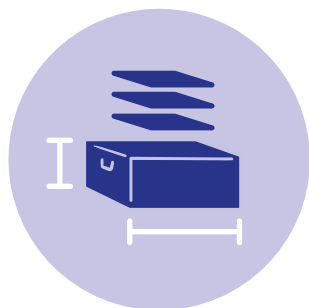
© 2026 All rights reserved. Published by LETZTEST.



<b>1. OVERVIEW</b>	<b>3</b>
1.1 SPECIFICATIONS	4
1.2 MICROBIOLOGICAL TESTING SECTION	5
1.3 PHYSICO-CHEMICAL TESTING SECTION	7
1.4 SUPPORTING TOOLS & DOCUMENT SECTION	10
1.5 BACKPACK FEATURES	11
1.6 DATA MANAGEMENT	12
<b>2. MICROBIOLOGICAL TESTING EQUIPMENTS</b>	<b>13</b>
2.1 LETZTEST MEMBRANE FILTRATION SET	14
2.2 LETZTEST INCUBATORS (TWO OPTIONS)	16
<b>3. PHYSICO-CHEMICAL TESTING EQUIPMENTS</b>	<b>19</b>
3.1 LETZTEST PHOTOMETER	20
3.2 PHOTOMETER PROBEBOX & EC-PROBE	23
3.3 LETZTEST VISUAL COLOR COMPARATORS	25
3.4 TURBIDITY TUBES	27
3.5 EC   TDS   TEMP – TESTERS	29
<b>4. CONSUMABLES</b>	<b>31</b>
<b>5. GENERAL INFORMATION</b>	<b>33</b>
5.1 SPECIAL ADVANTAGES	34
5.3 SUPPORT	35
5.4 CONTACT	36

# 1. OVERVIEW

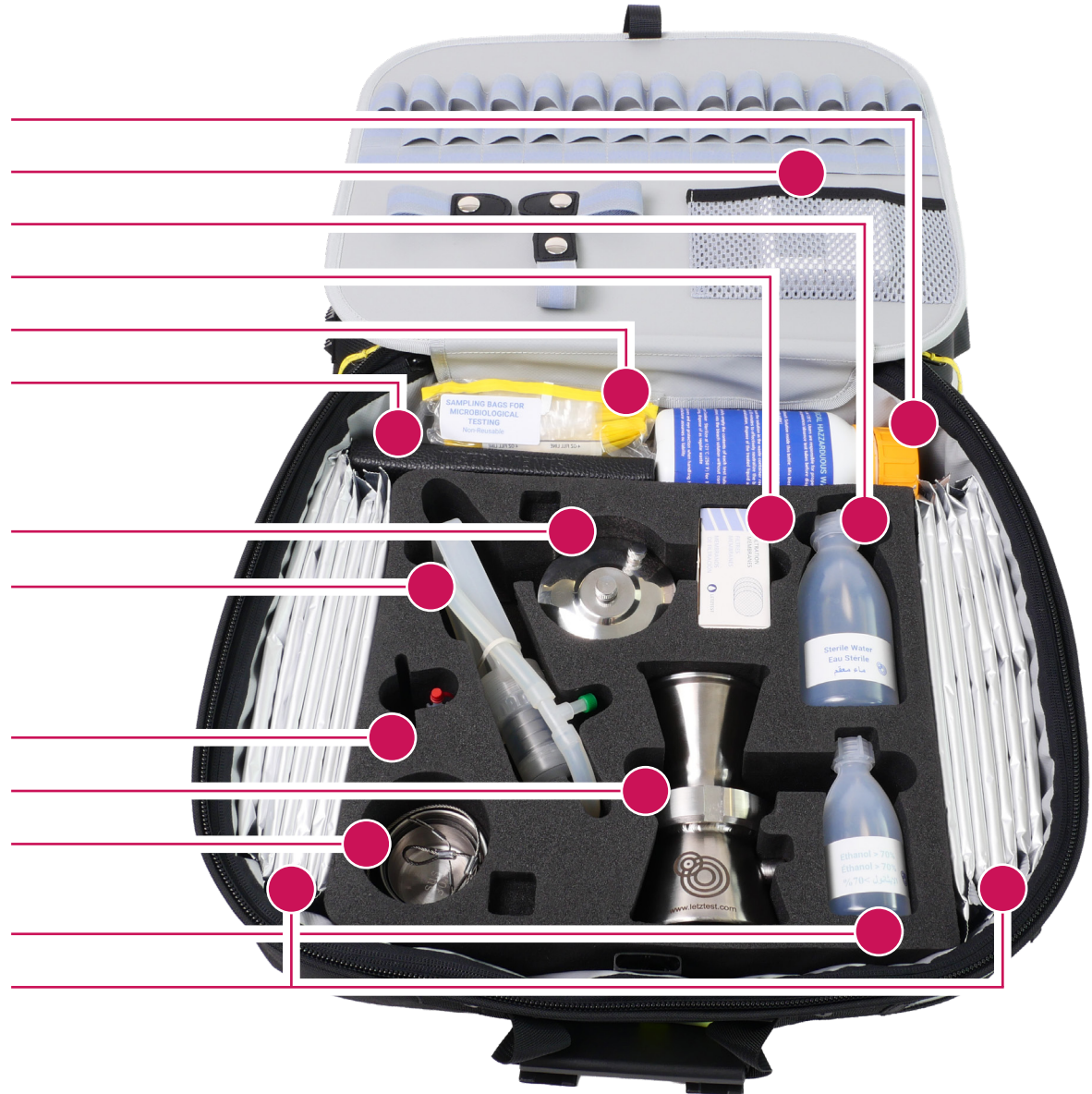
## 1.1 SPECIFICATIONS



PRODUCT NAME	LETZTEST WATER CHECKPACK PRO+
Article number	1275
Purpose	Water quality assessment in the first 72 hours of an emergency
Form	High quality emergency response backpack incl. LETZEST Electricity-Free Incubator bag
Material of backpack	Truck tarpaulin, original CORDURA® fabric and 3M™ Scotchlite™ reflective strips (backpack); fibreglass outside and aluminium coted inside (incubator)
Dimensions	470 × 390 × 300 mm (Backpack)   400 x 300 x 130 mm (Electricity-Free-Incubator Size M) (L × W × H)
Weight	11.9 kg (Backpack)   4.5 kg (Electricity-Free-Incubator Size M)
HS code	38221900
Selected priority parameters	<ul style="list-style-type: none"> <li>• <i>E. coli</i> (Colony forming units per 100 mL)</li> <li>• Enterococci (on request)</li> <li>• Al (Aluminium)</li> <li>• Cl<sub>2</sub> (Chlorine free/ residual)</li> <li>• Cl<sub>2</sub> (Chlorine total)</li> <li>• EC (Electric Conductivity)</li> <li>• F<sup>-</sup> (Fluoride)</li> <li>• Fe (Iron)</li> <li>• Mn (Manganese)</li> <li>• NO<sub>3</sub><sup>-</sup> (Nitrate)</li> <li>• pH (Acidity/ Alkalinity)</li> <li>• TDS (Total Dissolved Solids)</li> <li>• Temperature</li> <li>• Turbidity</li> </ul>
Optional parameters	> 140+ additional parameters on request (find full list in <a href="#">Technical Datasheet of LETZTEST Photometer Kit</a> )
Number of tests	Standard starter set includes consumables for 100 tests per priority parameter
Data management	Multiple options for data recording and transfer via Bluetooth, Wi-Fi, USB or by hand
Weather protection	Yes (robust outer shell provides protection from rain, UV exposure, and dust)

## 1.2 MICROBIOLOGICAL TESTING SECTION

- MICROBIOLOGICAL WASTE CONTAINER
- POCKET BALANCE INCL. CALCULATOR
- DISTILLED WATER BOTTLE
- FILTRATION MEMBRANES
- THIO SAMPLING BAGS
- INSTRUMENT CASE INKL. SPOON, TWEEZERS & PEN
- ALCOHOL CANDLE, STERILE WATER CUP & ETHANOL CUP
- HAND VACUUM PUMP INCL. SPARE PARTS BAG:
- CHECK VALVES
  - COIL SPRING
  - SEALING RING
- ETHANOL DRIP CAP WITH STRAP
- MEMBRANE FILTRATION APPARATUS (MFA)
- WATER SAMPLER CUP
- 70% ETHANOL BOTTLE
- DRY CHROMOGENIC PLATES



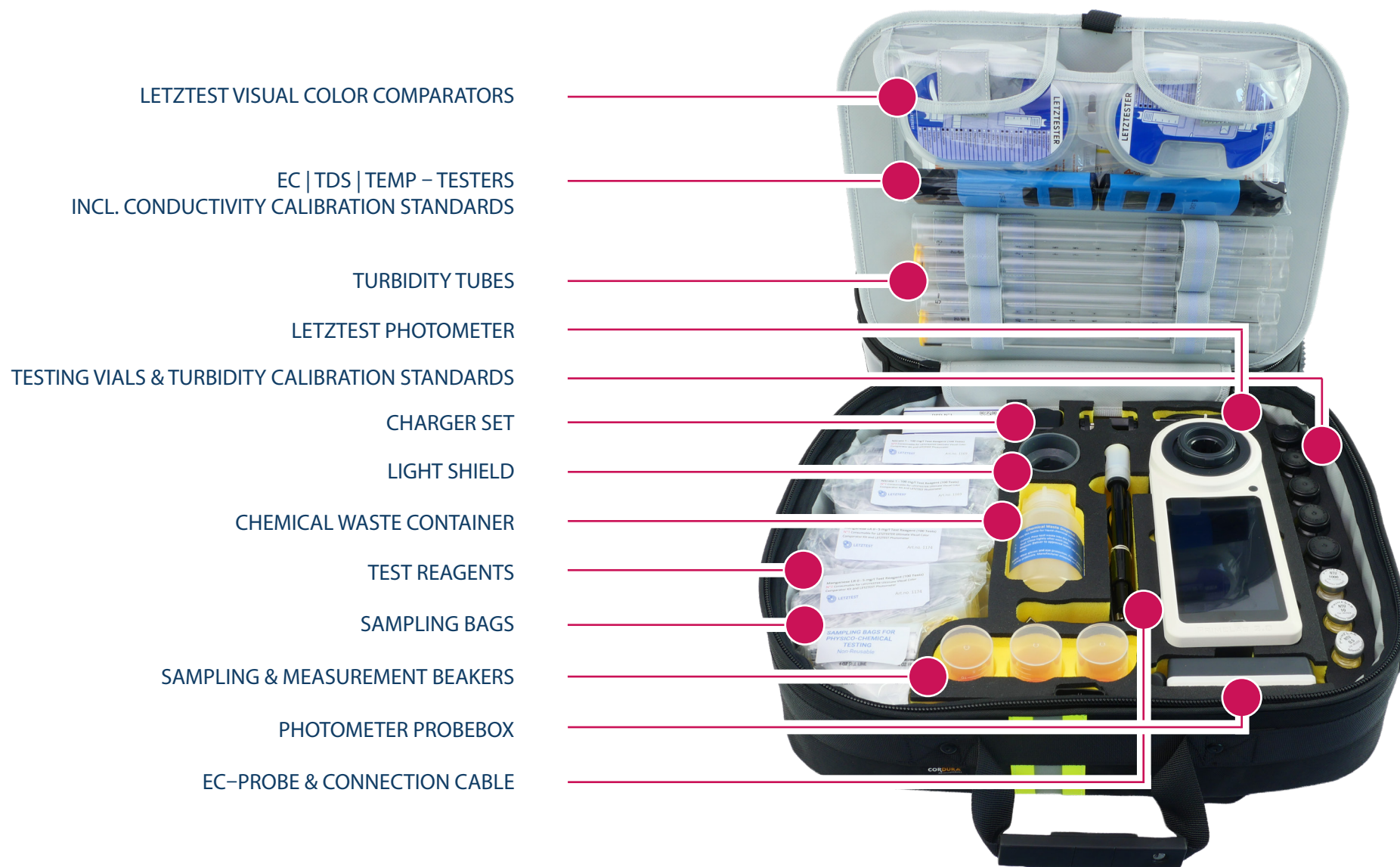
## 1.2 MICROBIOLOGICAL TESTING SECTION

### CONTENT LIST



ITEM	DESCRIPTION/ DETAILS	QTY.
Membrane filtration apparatus (MFA)	Pharmaceutical grade stainless steel	1 pc
Hand vacuum pump	Maintains vacuum via integrated check valve; highly robust polymer; 6 mm tubing connector with pharmaceutical-grade silicone vacuum tubing (inner Ø 6 mm)	1 pc
Spare parts bag	Incl.: 2x check valves and 1x coil spring for hand vacuum pump; 1x sealing ring for MFA	1 bag
Alcohol candle	Used for sterilizing instruments; pharmaceutical grade stainless steel	
Sterile water cup	To store sterile water during the testing procedure	1 pc
Ethanol cup	To store 70% ethanol during the testing procedure	1 pc
Distilled water bottle	For storing distilled water; 250 mL	1 pc
70% ethanol bottle	For storing 70% ethanol used in microbiological sampling and testing procedures; 100 mL	1 pc
Ethanol drip cap with strap	For 70% ethanol bottles used to refill ethanol candle	1 pc
Water sampler cup	For collecting water samples; stainless steel; 30 cm length; 150 mL	1 pc
Instrument case	Leather case with zipper closure for secure instrument storage	1 pc
Measuring spoon	Pharmaceutical grade stainless steel; 1 mL	1 pc
Tweezers	Flat-headed; pharmaceutical grade stainless steel	1 pc
Waterproof pen	For sample identification and labeling of dry chromogenic plates and general note-taking	1 pc
Pocket balance	Capacity: 320 g; readability (d): 0.1 g; incl. batteries and calculator	1 pc
Microbiological waste container	Wide-mouth; autoclavable; incl. biohazardous waste disposal instructions; 625 mL	1 pc
Filtration Membranes	Cellulose Nitrate Membranes for bacteriological water analysis by Filtration Method such as DIN EN ISO 9308-1; 100 pcs/ pkg	1 pkg
Thio sampling bags	For collecting microbiological samples, which will undergo in-depth analysis in a laboratory; single-use; 118 mL	25 pcs
Dry chromogenic plates	CompactDry ECO ( <i>E. coli</i> ); 4 pcs/ pkg	14 pkg

## 1.3 PHYSICO-CHEMICAL TESTING SECTION



## 1.3 PHYSICO-CHEMICAL TESTING SECTION

### CONTENT LIST



ITEM	DESCRIPTION/ DETAILS	QTY.
LETZTEST Photometer	Portable photometer for physico-chemical water analysis	1 pc
Testing vials	Glass vials with integrated light-shield lids; 10 mL	5 pcs
Light shield	To shield photometer testing vials from light during measurements	1 pc
Turbidity calibration standards	Sealed glass vials with 0.5/ 10/ 1000 NTU for calibration of photometer	3 pcs
Charger set	USB type C charger; plugs: EU type F/ UK type G/ US type A; AC adapter input 100–240 V AC; 50/60 Hz; 0.3 A	1 set
Cleaning cloth	Microfibre for cleaning of testing vials and photometer display	1 pc
Photometer ProbeBox	Add-on for LETZTEST Photometer to connect EC–Probe directly to photometer or smartphone to measure Electrical Conductivity (EC), TDS or temperature	1 pc
EC–Probe	Plastic body conductivity electrode for measuring EC, TDS, and temperature; for measurement ranges and resolution, please see page 20 under <b>SPECIFICATIONS — PHOTOMETER PROBEBOX &amp; EC–PROBE</b>	1 pc
Connection cable	To connect Photometer ProbeBox to photometer; 1 m	1pc
LETZTEST Visual Color Comparators	Each unit contains: comparator device; 6 different priority parameter-sticks; 25 mL shaker tube; 10 mL plastic syringe (graduated); 3 mL plastic syringe; 10,5 cm stirring rod; cleaning brush; testing instructions for each parameter	2 pcs
Turbidity Tubes	For visual measurement of water turbidity; measurement range: 5–500 NTU	2 pcs
EC   TDS   Temp. – Testers	Incl. manual and batteries	2 pcs
Sampling & measurement beakers	Material: PP transparent, screw cap made of PE; shatterproof; stackable; leakproof; for storage or transport of liquids and solids; temperature stability -90 to +100 °C; 60 mL	3 pcs
Conductivity calibration standards	For calibration of EC   TDS   Temp. – Testers and EC–Probe; 1413 µS/cm; each package 20mL	8 pcs
Chemical waste container	Wide-mouth; incl. hazardous chemical waste disposal instructions; 250 mL	1 pc
Sampling bag	For collecting physico-chemical samples, which will undergo in-depth analysis in a laboratory; single-use; 118 mL	25 pcs

CONTINUED ON NEXT PAGE

## 1.3 PHYSICO-CHEMICAL TESTING SECTION

### CONTENT LIST



ITEM	DESCRIPTION/ DETAILS	QTY.
Aluminium test reagents	Tablet; measurement range: 0.00–0.30 mg/L (P & VCC)*	100 tests
Chlorine (residual) DPD N°1 test reagents	Tablet; measurement range: 0.00–8.00 mg/L (P)   0.0–5.0 mg/L (VCC)	100 tests
Chlorine (total) DPD N°3 test reagents	Tablet; measurement range: 0.00–8.00 mg/L (P)   0.0–5.0 mg/L (VCC)	100 tests
Fluoride (SPADNS method) test reagents	Tablet; measurement range: 0.00–2.00 mg/L (P)	50 tests
Iron (LR) test reagents	Tablet; measurement range: 0.00–1.00 mg/L (P)   0.05–1.00 mg/L (VCC)	100 tests
Manganese (LR) test reagents	Powder Pillow; measurement range: 0.20–5.00 mg/L (P)   0.00–5.00 mg/L (VCC)	100 tests
Nitrate test reagents	Powder Pillow; measurement range: 1–100 mg/L (P & VCC)	100 tests
pH-Universal test reagents	Tablet; measurement range: pH 5.0–11.0 (P)   pH 4.0–10.0 (VCC)	100 tests

\* (P) for Photometer | (VCC) for Visual Color Comparator

## 1.4 SUPPORTING TOOLS &amp; DOCUMENT SECTION

**A4 NOTEBOOK**

- To record data incl. a digital device holder; 1 pc

**WORLD HEALTH ORGANISATION GUIDELINES**

- *Guidelines for drinking-water quality – Small water supplies*; 1 pc
- Incl.: *Sanitary inspection packages – A supporting tool for the Guidelines for drinking-water quality: small water supplies*; 1 pc

**YOUR PRACTICAL HANDBOOK**

- For Membrane Filtration Set
- With re-writable paper inside

**TECHNICAL SUPPORT & DATA-MANAGEMENT SHEETS**

- Laminated and rewritable; 1 pc

**PENS**

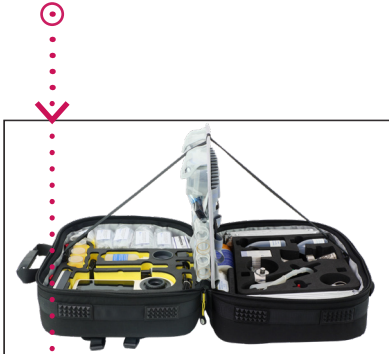
- Ballpoint pen; 3 pcs
- Waterproof pen; 1 pc

**POCKET BALANCE INCL. CALCULATOR**

- Capacity: 320 g; readability (d): 0.1 g; 1 pc

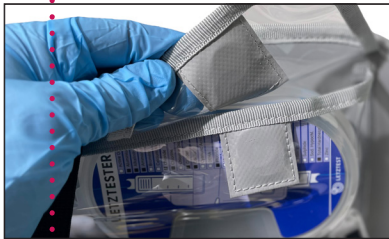


## 1.5 BACKPACK FEATURES



### PRACTICALITY

The self-supporting center divider separates microbiological and physico-chemical testing equipment and allows easy, simultaneous access from both sides.



### SPEED

Magnetic mounting points at multiple positions allow equipment to be removed and reinserted quickly.



### INTERIOR LAYOUT

Custom-cut foam, elastic loops, and clear pockets keep every item securely in place and well organized.



### MATERIAL

Truck tarpaulin, orig. CORDURA® fabric, and 3M™ Scotchlite™ reflective strips; all surfaces are easy to clean and disinfect.



### PROTECTION & STABILITY

Reflective elements increase visibility, while the heavy-duty two-way zipper and wraparound webbing keep the backpack secure and stable.



### HANDLES

Sturdy carrying handles and ergonomic backpack straps ensure comfortable and versatile transport.



### FEET

Equipped with eight serrated rubber feet for a stable, protective, and elevated base.



### EXTRA STORAGE

A document compartment between the front and inner section plus additional gaps, loops, and slots provide extra storage space.

## 1.6 DATA MANAGEMENT

### DIGITAL



The LETZTEST Photometer, in combination with the LabCOM software, enables efficient digital data management. Measurement data is stored directly on the device during field use and automatically synchronized to the cloud once a network connection is available. The software supports structured organization of sampling locations, test results, limit value exceedances, advanced data analysis, as well as report generation and data export.

### ANALOG

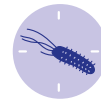


The LETZTEST Water CheckPack Pro also supports analog data management through durable, reusable documentation materials. Laminated, rewritable sheets allow manual recording of measurement results on site, complemented by a notebook for additional observations. The WHO *guidelines* and the *sanitary inspection packages* provide practical tools for standardized and WHO-compliant data collection.

---

## 2. MICROBIOLOGICAL TESTING EQUIPMENTS

## 2.1 LETZTEST MEMBRANE FILTRATION SET



Quantifies *E. coli* following DIN EN ISO 9308-1. It also allows quantification of other fecal indicator bacteria per 100 mL of water sample. (On request, we also provide CompactDry ETC for the detection and enumeration of *Enterococcus*.)

The presence of fecal bacteria in water is a clear indication of contamination from human or animal excrement, which carries a high risk of pathogenic microorganisms causing severe waterborne diseases (e.g. Cholera). Monitoring fecal indicator bacteria is crucial to ensure safe drinking water and safeguard public health.

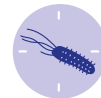
According to the World Health Organization (WHO) drinking water guidelines, safe water must not contain any *E. coli* or other fecal indicator bacteria. (Reference: *WHO Guidelines for drinking-water quality*, Fourth Edition, 2017)

## SPECIFICATIONS — LETZTEST MEMBRANE FILTRATION SET



Product Name	LETZTEST Membrane Filtration Set
Purpose	For microbiological analysis in water, beverage, and pharmaceutical applications
Testing equipment material	Pharmaceutical-grade stainless steel (1.4404)
Filtration unit	1-branch manifold, stand-alone
Filtration volume	100 mL graduated
Sterilisation	Flame, autoclave, or other
Filter compatibility	Standard membrane filtration filters for microbiological analysis; Ø 47 mm or 50 mm; pore sizes 0.2 µm or 0.45 µm (cellulose nitrate or other polymers)
Sealing ring	Heat-resistant EPDM clamp seal
Detection limit	1 CFU/ 100 mL (DIN EN ISO 9308-1)
Suggested culture media	CompactDry ECO dehydrated culture plates or other ready-to-use chromogenic media (e.g., Sartorius Stedim Biotech Nutrient Pad Sets, Lauryl Sulphate Broth Sets, and more); also compatible with reusable or self-prepared Petri dishes for maximum flexibility
On request	CompactDry ETC for the detection and enumeration of <i>Enterococcus</i>
Incubation	Typically 24 h at 37°C for dry chromogenic plates
Power source	Not required
Languages	Englisch, French, Arabic
Country of origin	Germany

## 2.2 LETZTEST INCUBATORS (TWO OPTIONS)



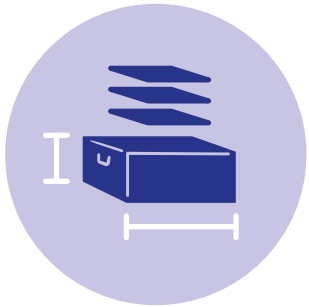
Together with an incubator, the membrane filtration set becomes a compact system that enables laboratory-grade microbiological testing anywhere.

The LETZTEST Water CheckPack Pro+ comes with the world's only 100% electricity-free incubator (grey bag, Size M). It can be activated by sunlight, hot water, or a USB heating mat. Once activated, the incubator maintains a temperature of  $37^{\circ}\text{C} \pm 0.5^{\circ}\text{C}$  for at least 24 hours.

This allows microbiological samples to be incubated without electricity or batteries. The incubator is highly robust and resistant to damage. The Size M incubator can accommodate up to 40 Petri dishes simultaneously.

For maximum independence, we recommend our electricity-free incubator, which has already been successfully validated by accredited laboratories. As an alternative, the Mobile Mini Incubator (black suitcase) is available for users who prefer a compact, ultra light and electricity-powered solution. This portable incubator can be powered via a standard power outlet or a vehicle's 12 V cigarette lighter socket.

## SPECIFICATIONS — LETZTEST ELECTRICITY-FREE INCUBATOR SIZE M\*



Product Name	LETZTEST Electricity-Free Incubator Size M*
Purpose	Incubate water samples at 37°C without electricity
Dimensions	400 x 300 x 130 mm (L x W x H)
Weight	4.5 kg
Form	Insulated bag made of fibreglass outside and aluminium coted inside
Temperature	37°C +/- 0.5°C, > 24 h
Capacity	Up to 40 dry chromogenic plates (CompactDry ECO)
Special feature	The incubators can also cool the samples down to 37°C if the outside temperature is higher
Included equipment	5x heating plates, 1x digital temperature logger incl. smartphone app, 1x analog thermometer, 1x waterproof bag for optional activation with hot water, 1x heating mat for optional electrical activation with a car battery
Technical support	QR-code for direct technical support via WhatsApp

\* The LETZTEST Water CeckPack Pro+ comes with LETZTEST Electricity-Free Incubator Size M as standard.



## SPECIFICATIONS — MOBILE MINI INCUBATOR (OPTIONAL)



<b>Product Name</b>	<b>LETZTEST</b>
Purpose	Incubate water samples at 37°C
Dimensions	270 x 210 x 100 mm (L x W x H)
Weight	1.2 kg
Form	Robust ABS case
Temperature range	Ambient + 5 to 45°C +/- 0.5°C
Power supply adaptor	100-240v AC @ 320 mA
Power supply incubator	12 Volts DC @ 1 Amp
Included	Worldwide Universal Power Supply with Interchangeable Power plugs for UK, Europe, and America & Australia together with Automatic voltage selection – 110 or 240 volts mains and 12-volt cigar lighter cable
Temperature control	MX Darlington switched solid state
Chamber size (useable)	110 x 130 x 700 mm (L x W x H)

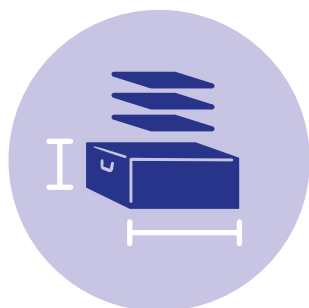


---

# 3. PHYSICO-CHEMICAL TESTING EQUIPMENTS



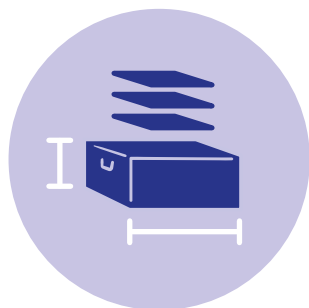
## SPECIFICATIONS — LETZTEST PHOTOMETER



PRODUCT NAME	LETZTEST PHOTOMETER
Purpose	Photometric analysis of physico-chemical water parameters
Dimensions	255 x 100 x 750 mm (L x W x H)
Weight	0.736 kg
Spectral range	390–950 nm (parallel reading)
Wavelengths (18 peaks)	410, 435, 460, 485, 510, 535, 560, 585, 610, 645, 680, 705, 730, 760, 810, 860, 900, 940 nm
Optical setup	180° & 90° (direct/ indirect measurement)
Photometric accuracy	±2 % FS (at 25 °C)
Testing parameters	> 140+ additional parameters on request (find full list in <a href="#">Technical Datasheet of LETZTEST Photometer Kit</a> )
Electrode interface	USB type C connector for Photometer ProbeBox
Data management software	Easy data transfer to LabCOM® software (Windows/ Mac); LabCOM® app (Android/ iOS); LabCOM® cloud
Connectivity (technical)	Bluetooth® 4.2; WiFi; USB type C; 4G*
Offline usability	Yes, including automatic data upload when reconnected
Built-in data logging	Internal memory >150000 measurements
Display	5.5" Color HD touchscreen
Camera	Integrated QR-code scanner for easy sampling site identification
Calibration	Auto-calibration with certificate sent to your e-mail (software); calibrated for LETZTEST test reagents
Menu guidance	4-button intuitive interface with illustrated on-screen instructions
Power supply	8400 mAh Li-Ion battery
Charging method	Via AC adapter; USB type C
AC adapter input	100–240 V AC; 50/60 Hz; 0.3 A
Charging time	4–8 hours (0–100 %)

CONTINUED ON NEXT PAGE

## SPECIFICATIONS — LETZTEST PHOTOMETER



Languages	>15
Operating conditions	5 °C–45 °C; 30–90 % RH
Waterproof rating	IP 54 (splash-waterproof)
WiFi frequency	2.4 GHz & 5 GHz
Transmit power	Max. 16 dBm
Pre-activated priority parameters   measurement range   test reagent type   resolution	<ul style="list-style-type: none"> <li>Aluminium   0.00–0.30 mg/L   tablet reagent   resolution 0.01</li> <li>Chlorine (free-combined-total)   0.00–8.00 mg/L   tablet reagent   resolution 0.01</li> <li>Electric Conductivity (with ProbeBox &amp; EC-Probe)   0–200 mS/cm   cond. calibration standard   resolution 1 µS/cm</li> <li>Fluoride (SPADNS method)   0.00–2.00 mg/L   liquid reagent   resolution 0.01</li> <li>Iron (LR)   0.00–1.00 mg/L   tablet reagent   resolution 0.01</li> <li>Manganese (LR)   0.20–5.00 mg/L   powder pillow reagent   resolution 0.01</li> <li>Nitrate (HR)   1–100 mg/L   powder pillow reagent   resolution 1</li> <li>pH-Universal   pH 5.0–11.0   tablet reagent   resolution 0.1</li> <li>TDS (with ProbeBox &amp; EC-Probe)   0–100 g/L (0–100 ppt)*   cond. calibration standard   resolution 1</li> </ul>
(Additional parameters can be activated on request)	<ul style="list-style-type: none"> <li>Temperature   0–50 °C ATC (with ProbeBox &amp; EC-Probe)   cond. calibration standard   resolution 1</li> <li>Turbidity (NTU)   0.5–1000.0 NTU   no reagent   resolution 0.1</li> </ul>

\* If the TDS conversion factor is set to the default value of 0.5

## 3.2 PHOTOMETER PROBEBOX & EC – PROBE

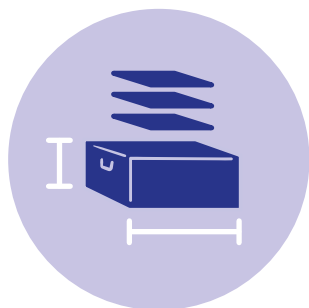


The LETZTEST ProbeBox enables precise electrochemical measurement of conductivity (EC), total dissolved solids (TDS), and temperature in emergency relief settings, together with your photometer or smartphone.

Its plug-and-play connection via USB-C ensures seamless integration and reliable data transfer without the need for batteries or wireless connectivity.

With a wide range of compatible electrode kits and calibration solutions, the system offers a versatile extension for multi-parameter water analysis. It can be upgraded, for example, with probes for pH or ORP.

## SPECIFICATIONS — PHOTOMETER PROBEBOX &amp; EC-PROBE



Product Name	Photometer ProbeBox & EC-Probe
Purpose	Electrochemical measurement of conductivity (EC), TDS and Temperature in water
Dimensions	ProbeBox: 104 × 60 × 29.2 mm (L x W x H)
Weight	ProbeBox: 0.167 kg
Form	Compact interface box with EC-Probe with plastic electrode
Probe type	EC electrode (K = 1.0)
Measurement range   resolution	EC: 0–200 mS/cm; TDS: 0–100 g/L (0–100 ppt)* ; Temp.: 0–50 °C ATC   resolution: 1 µS/cm
Connectivity	USB type C to photometer or Android device
Power supply	Powered via USB connection (no internal battery)
Operating temperature	ProbeBox: 5–45 °C ; EC-Probe: up to 50 °C
Compatibility	LETZTEST Photometer; smartphone; LabCOM app; ProbeBox electrodes
Add-ons	Optional pH and ORP probes available on request
Cable length	Connection cable: 1 m; EC-Probe cable: 1 m

\* If the TDS conversion factor is set to the default value of 0.5



### 3.3 LETZTEST VISUAL COLOR COMPARATORS



In addition to the photometer, the LETZTEST Water Check-Pack Pro includes two LETZTEST Visual Color Comparators, each supplied in a convenient transport box. This setup enables two additional technicians to carry out parallel testing of multiple water points for physico-chemical parameters when time matters.

The LETZTEST Visual Color Comparators provide simple and reliable access to semi-professional water analysis. Their ergonomic design and high-quality materials ensure easy handling and consistent results, using the same cost-efficient, long-lasting test reagents as the LETZTEST Photometer.

Using a continuous color scale on interchangeable parameter sticks, measurements are highly precise without the need for intermediate estimation between color blocks. The system allows testing of a wide range of parameters, including Aluminum, Chlorine (free/residual and total), Iron, Manganese, Nitrate, and pH, and can be easily expanded with additional parameter sticks and test reagents.

## SPECIFICATIONS — LETZTEST VISUAL COLOR COMPARATORS



Product Name	LETZTEST Visual Color Comparator
Purpose	Visual analysis of physico-chemical water testing parameters using color comparison method
Dimensions	170 x 100 x 50 mm (L x W x H)
Weight	0.194 kg
Form	Visual comparator device with accessories in robust plastic transport unit
Measurable priority parameter   measurement range   test reagent type    (Additional priority parameter-sticks available on request)	<ul style="list-style-type: none"> <li>• Aluminium   0.00–0.30 mg/L   tablet reagent</li> <li>• Chlorine free-combined-total (HR)   0.0–5.0 mg/L   tablet reagent</li> <li>• Iron (LR)   0.05–1.00 mg/L   tablet reagent</li> <li>• Manganese (LR)   0.00–5.00 mg/L   powder pillow reagent</li> <li>• Nitrate (HR)   1–100 mg/L   powder pillow reagent</li> <li>• pH-Universal   pH 4.0–10.0   tablet reagent</li> </ul>
Optional parameters	> 30+ additional parameters on request (find full list in <a href="#">Tech. Datasheet of Visual Color Comparator Kit</a> )
Sample volume	Typically 25 mL
Test reagents	Tablet reagents, fast dissolving, no cooling required
Shelf life	Up to 10 years
Power requirement	None
Calibration	Not required
Compatibility	Test reagents compatible with LETZTEST Photometer
Expandability	Additional parameter sticks and test reagents available
Included components in each unit	Comparator device; 6 different priority parameter-sticks; 25 mL shaker tube; 10 mL syringe; 3 mL syringe; stirring rod; cleaning brush; testing instructions for each parameter
Application	Field and laboratory water testing
Storage temperature	Room temperature

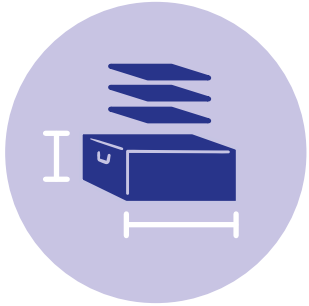
## 3.4 TURBIDITY TUBES



In addition to the photometer, the LETZTEST Water Check-Pack Pro is equipped with two turbidity tubes, enabling two additional technicians to perform parallel turbidity testing at multiple water points when time matters.

A highly practical and user-friendly tool for visually measuring water turbidity. Turbidity is an essential parameter, for example, prior to water treatment by chlorination in emergency relief settings. Chlorine is an effective disinfectant when water turbidity is below 5 NTU and for ongoing water quality monitoring.

## SPECIFICATIONS — TURBIDITY TUBES



Product Name	Turbidity Tubes
Purpose	User-friendly tool for visual measurement of water turbidity
Dimensions	330 x 60 x 25 mm (L x W x H)
Weight	0.2 kg
Form	Plastic tubes
Measurement range	5–500 NTU

## 3.5 EC | TDS | TEMP – TESTERS



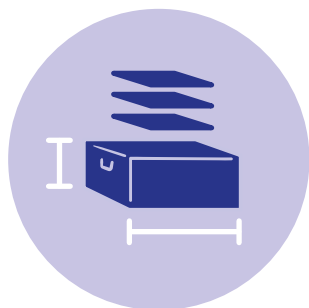
In addition to the photometer, the LETZTEST Water Check-Pack Pro is equipped with two EC | TDS | Temp. – Testers enabling two additional technicians to perform parallel measurements at multiple water points when time matters.

The EC | TDS | Temp. – Testers provide a reliable and user-friendly solution for measuring conductivity (EC), total dissolved solids (TDS), and temperature in water in emergency relief settings. Designed for simplicity and accuracy, they deliver fast results and are suitable for both field and laboratory use.

Durable graphite electrodes minimize polarization effects and ensure stable measurements, while an integrated temperature sensor enables automatic temperature compensation for improved accuracy.

With automatic one-point calibration and a wide measurement range, the testers offer a convenient and efficient way to monitor key water quality parameters without complex setup or maintenance.

## SPECIFICATIONS — EC | TDS | TEMP – TESTERS



Product Name	EC   TDS   Temp. – Tester
Purpose	Measurement of EC, TDS, and Temperature in water
Dimensions	160 × 40 × 17 mm (L x W x H)
Weight	each 0.075 kg
Form	Handheld multi-parameter tester
Parameters	EC, TDS, Temperature
Measurement range	EC: 0–2000 $\mu\text{S}/\text{cm}$ ; TDS: 0–1000 ppm (approx., depending on conversion factor); Temp.: 0–50 $^{\circ}\text{C}$
Resolution	Resolution 1 $\mu\text{S}/\text{cm}$
Accuracy	$\pm 2\%$ of full scale
Temperature compensation	Automatic
Calibration	1-point (1413 $\mu\text{S}/\text{cm}$ )
Electrode type	Graphite electrode
Power supply	CR2032 3V lithium battery
Battery life	Approx. 250 hours continuous use
Incl. components	Protective cap; batteries; instruction manual; conductivity calibration standards 1413 $\mu\text{S}/\text{cm}$ , 8 x 20 mL packages; 3 sampling & measurement beakers



---

# 4. CONSUMABLES



TO REFILL CONSUMABLES YOU CAN ORDER THE '**CONSUMABLES REFILL BOX PRO+**':



ART. NO.	ITEM	MEASUREMENT RANGE/ DETAILS	FORM	QTY.
1276	Consumables Refill Box Pro+	see contents in list below	cardboard box	1 pc

CONTENTS OF '**CONSUMABLES REFILL BOX PRO+**':

ART. NO.	ITEM	MEASUREMENT RANGE/ DETAILS	FORM	QTY.
116379	CompactDry ECO ( <i>E. coli</i> )	package of 4 pcs; sterile packed	Petri dish	for 100 tests
115406	CompactDry ETC (Enterococci)	package of 4 pcs; sterile packed	Petri dish	on request
114930	Filtration Membranes	box of 100 pcs	cardboard box	for 100 tests
114928	Thio sampling bags	non-reusable; 118 mL	plastic bags	for 100 tests
1176	Aluminium test reagents	0.00–0.30 mg/L (P & VVC)*	tablets	for 100 tests
1167	Chlorine (residual) DPD N°1 test reagent	0.00–8.00 mg/L (P)*   0.0–5.0 mg/L (VCC)	tablets	for 100 tests
1172	Chlorine (total) DPD N°3 test reagent	0.00–8.00 mg/L (P)   0.0–5.0 mg/L (VCC)	tablets	for 100 tests
1219	Fluoride (SPADNS method) test reagent	0.00–2.00 mg/L (P)	liquids	for 50 tests
1170	Iron (LR) test reagent	0.00–1.00 mg/L (P)   0.05–1.00 mg/L (VCC)	tablets	for 100 tests
1174	Manganese (LR) test reagent	0.20–5.00 mg/L (P)   0.00–5.00 mg/L (VCC)	powder pillow	for 100 tests
1169	Nitrate (HR) test reagent	1–100 mg/L (P & VVC)	powder pillow	for 100 tests
1171	pH-Universal test reagent	pH 5.0–11.0 (P)   pH 4–10 (VCC)	tablet reagent	for 100 tests
1270	Conductivity calibration standards	1413 $\mu$ S/cm; 20 mL (for EC   TDS   Temp. – Tester & EC–Probe)	liquids	8 pcs
1271	Turbidity calibration standard set	0.5/ 10/ 1000 NTU (P)	liquids in sealed glas vails	1 set

\* (P) for Photometer | (VCC) for Visual Color Comparator

---

# 5. GENERAL INFORMATION

## 5.1 SPECIAL ADVANTAGES



### TEAM-READY

Designed for simultaneous use by up to three technicians. One operates directly at the backpack while two deploy to additional sampling points in the field, enabling efficient teamwork and faster coverage.



### LONG-TERM & ROBUST

High-grade stainless steel equipment, handcrafted in Germany, is securely positioned in precision-cut foam, ensuring max. protection, stability, and durability during transport and use. The CheckPack is designed as a long-term, sustainable solution, not a disposable kit. With every component individually replaceable and easily reorderable.



### EASY-TO-USE

Designed for intuitive, user-friendly operation in the field. Fully mobile and independent from power supply, allowing use anywhere. Simple procedures ensure fast deployment without the need for complex training or technical expertise.



### ALL-IN-ONE SOLUTION

A complete field solution developed with emergency relief experts: equipment, consumables, instructions, documentation, and disposal. Everything essential, fully mobile and self-contained.

\* From Mozambique to Vietnam: teams on the ground making a difference. Thanks to the people of Malteser International e.V. and Disaster Relief Systems - Resylia GmbH for sharing these moments.

### 5.3 SUPPORT

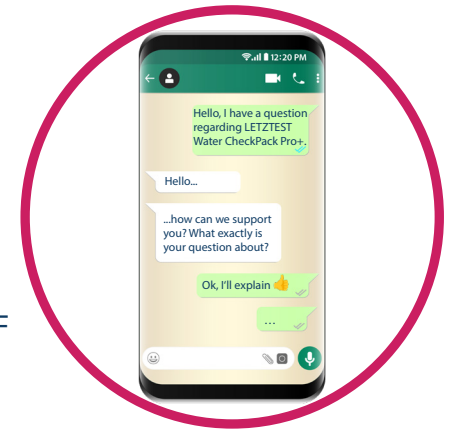
FIND QR-CODE IN THE PRODUCT THAT LEADS TO...



PRE-RECORDED VIDEO-TUTORIALS



DIRECT WHATSAPP SUPPORT CHAT WITH LETZTEST TECHNICAL STAFF



ONLINE SUPPORT TRAINING WITH LETZTEST TECHNICAL STAFF



## 5.4 CONTACT



### **LETZTEST**

Gottfried-Hagen Str. 60-62  
51105 Cologne  
Germany

WEBSITE      [www.letztest.com](http://www.letztest.com)  
E-MAIL        [info@letztest.com](mailto:info@letztest.com)  
PHONE         +49 (0) 221 / 560 909 04



### **WHATSAPP**

TECHNICAL ADVISOR    +49 (0) 156 / 78 85 01 03  
SALES ADVISOR        +49 (0) 157 / 896 275 36