



LETZTEST MOBILE WATER LAB BOX

TECHNICAL DATASHEET

A fully equipped box for testing all relevant micro-biological and physico-chemical parameters in water. It combines individual LETZTEST kits with general laboratory tools, transforming them into an autonomous, efficient, and professional laboratory.

Designed to offer maximum flexibility and credibility when monitoring off-grid water systems.

A product of LETZTEST
Contact: info@letztest.com
Web: www.letztest.com

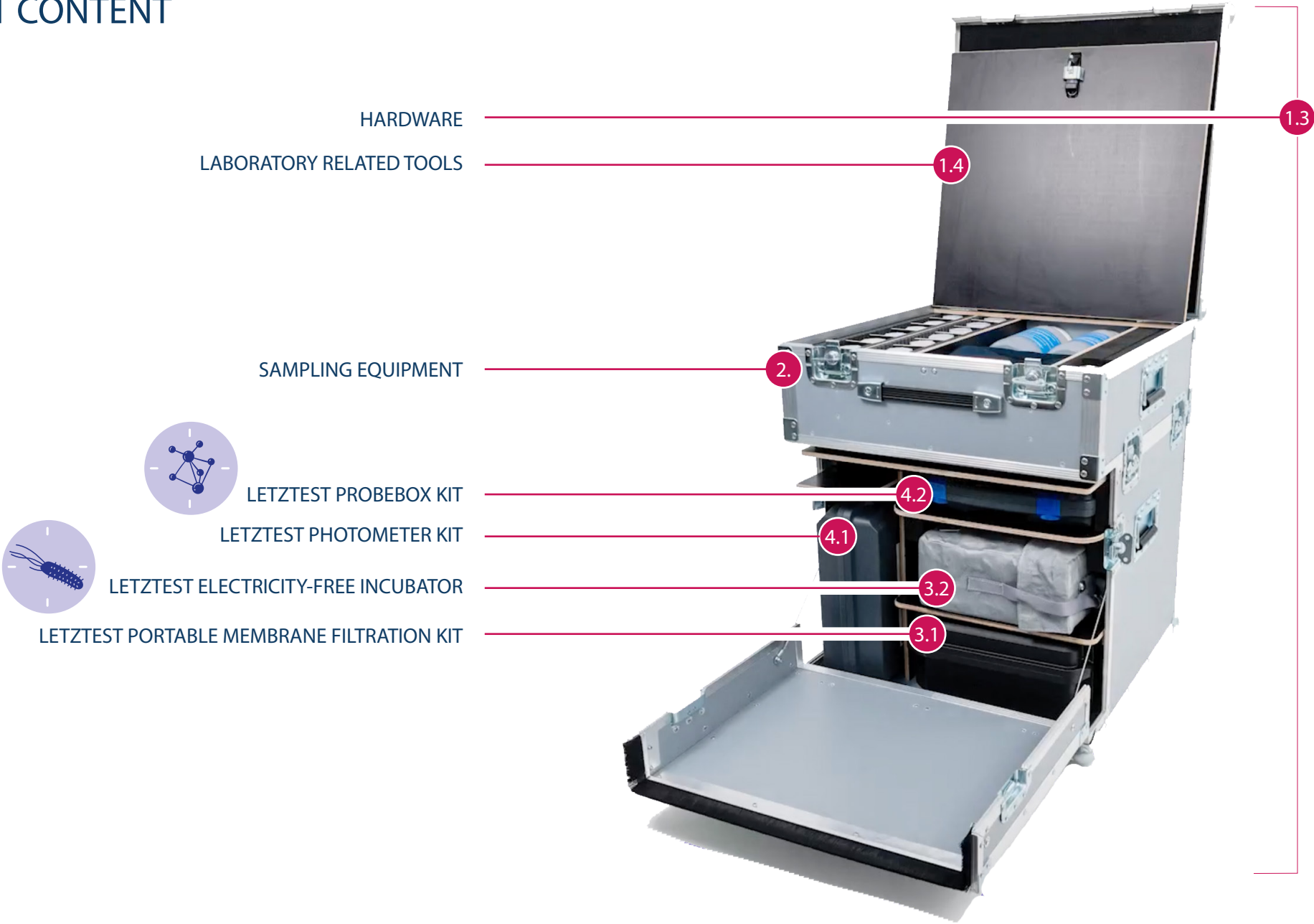
© 2025 All rights reserved. Published by LETZTEST.



| | | |
|-----|---|----|
| 1. | LETZTEST MOBILE WATER LAB BOX | 3 |
| 1.1 | CONTENT | 4 |
| 1.2 | SPECIFICATIONS | 5 |
| 1.3 | HARDWARE | 6 |
| 1.4 | LABORATORY RELATED TOOLS | 8 |
| 2. | SAMPLING EQUIPMENT | 9 |
| 3. | MICROBIOLOGICAL TESTING EQUIPMENT | 11 |
| 3.1 | LETZTEST PORTABLE MEMBRANE FILTRATION KIT | 12 |
| 3.2 | LETZTEST ELECTRICITY-FREE INCUBATOR | 15 |
| 4. | PHYSICO-CHEMICAL TESTING EQUIPMENT | 18 |
| 4.1 | LETZTEST PHOTOMETER KIT | 19 |
| 4.2 | LETZTEST PROBEBOX KIT | 23 |
| 5. | CONSUMABLES & ADD-ON EQUIPMENT | 26 |
| 5.1 | FOR MICROBIOLOGICAL TESTING EQUIPMENT | 27 |
| 5.2 | FOR PHYSICO-CHEMICAL TESTING EQUIPMENT | 28 |
| 6. | GENERAL INFORMATION | 36 |
| 6.1 | SPECIAL ADVANTAGES | 37 |
| 6.2 | SUPPORT | 38 |
| 6.3 | CONTACT | 39 |

1. LEZTEST MOBILE WATER LAB BOX

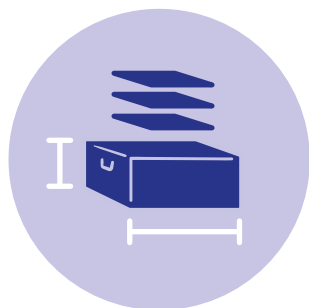
1.1 CONTENT



1.2 SPECIFICATIONS



The following specifications refer to the product as delivered in the standard starter-set.



| PRODUCT NAME | LETZTEST MOBILE WATER LAB BOX |
|--|--|
| Article Number | 1190 |
| Purpose | Complete mobile water quality testing laboratory in a box for microbiological and physico-chemical analysis |
| Form | Custom-made hard-shell box |
| Material | Ultra-light, virtually unbreakable special polymer engineered by ThyssenKrupp |
| Dimensions | 58 × 58 × 71 cm (L × W × H) |
| Weight | 55 kg |
| HS Code | 38221900 |
| Testing Parameters (incl. in Starter-Set) | 27 selected priority parameters: <i>E. coli</i> (Escherichia coli), TC/OC (Total & Other Coliforms), Alk-M (Alkalinity M), Al (Aluminium), NH ₃ (Ammonia), As (Arsenic), Cl ⁻ (Chloride), Cl ₂ (Chlorine – free, combined & total), Col (Colour – Hazen/APHA), Cu (Copper), F ⁻ (Fluoride – SPADNS method), TH (LR/HR) (Total Hardness – Low/High Range), Fe (Iron), Pb (Lead) - coming soon, Mn (Manganese), NO ₃ ⁻ (Nitrate), NO ₂ ⁻ (Nitrite), PO ₄ ³⁻ (Phosphate – ortho), SO ₄ ²⁻ (Sulphate), SS (Suspended Solids), Turb (Turbidity), EC (Electric Conductivity), pH (Acidity/Alkalinity), TDS (Total Dissolved Solids), Temp (Temperature) |
| Available Optional Parameters | > 150 possible parameters (found under ' Consumables & Add-ons ') |
| Number of Tests | Standard starter set includes consumables for 300 tests per priority parameter |
| Data Management | Multiple options for data recording and transfer via Bluetooth, Wi-Fi, USB or by hand |
| Can be Used | In-house (benchtop) & outdoor (mobile) |
| Lockable | Yes (lock included) |
| Carring Options | With multiple handles |
| Transportation Options | Designed for flexible transport in car trunks, pick-ups, trucks, tuk-tuks, and motorcycles |
| Weather Protection | Yes (protective cover against rain, sun, and dust included) |
| Branding | Yes (cover can be branded on demand with a logo of your choice) |
| Country of Origin | Germany |

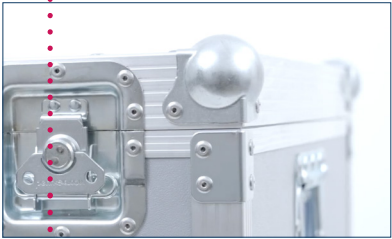
1.3 HARDWARE



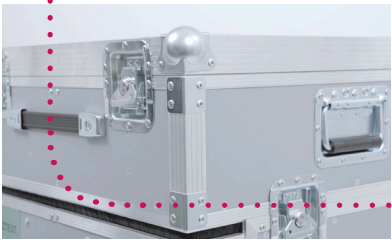
PROTECTIVE COVER
Heavy-duty tarpaulin with handle access; protects from rain, sun, and dust. Customizable with logo of your choice on demand.



MATERIAL
Made of ultra-light, virtually unbreakable special polymer engineered by ThyssenKrupp.



DESIGN
Shock-resistant construction with reinforced corner protection.



HANDLES
Equipped with strong carrying handles.



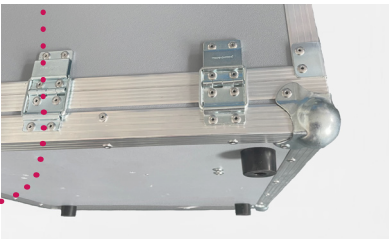
EXTRA SPACE
Additional compartment for optional equipment (e.g., Bunsen burner, hand sanitizer).



ARRANGED EQUIPMENT
Thoughtfully organized interior layout for easy & quick access to all sampling and testing equipment.



INTERIOR LAYOUT
Custom-made dividers and water-resistant foam panels prevent movement during transport.



FEET
Fitted with non-slip rubber feet for extra stability.

1.3 HARDWARE



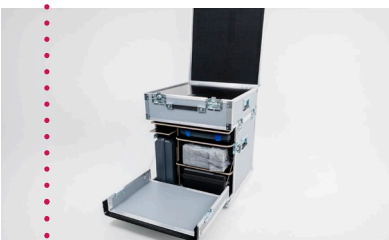
UPPER SECTION

The top part containing sampling equipment can be detached and used separately.



LID INTERIOR

Full Velcro wall on the inside of the upper lid for flexible equipment placement.



WORK SURFACES

Two stable, disinfestable work surfaces for testing and note-taking.



FRONT FLAP

Additional dust protection integrated into the front closure.



OPTIONAL GPS TRACKER

The box can be equipped with a GPS transmitter.



LOCKABLE

The box can be securely locked with a padlock.



MOTORCYCLE MOUNT

Custom fiberglass mount produced in Kigali. (on demand)



MOUNTING OPTIONS

Designed for flexible transport in car trunks, pick-ups, trucks, tuk-tuks, and motorcycles.

1.4 LABORATORY RELATED TOOLS

LABORATORY COAT;
Size M, long-sleeved with
button front, inner and
outer pockets; 1 pc



A4 NOTEBOOK
To record data, including a
digital device holder; 1 pc

PENS

- Ballpoint Pen; 2 pcs
- Waterproof Laboratory Pen; 2 pcs



WORLD HEALTH ORGANISATION GUIDELINES

- *Guidelines for drinking-water quality – Small water supplies*; 1 pc
- *Sanitary inspection packages*; 1 pc



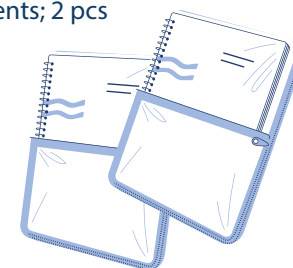
BIN CARD

Laminated for easy stock
management; 1 pc



A4 DOCUMENT POUCHES

Velcro-attachable and
waterproof for your own
documents; 2 pcs



2. SAMPLING EQUIPMENT

2. SAMPLING EQUIPMENT

REUSABLE SAMPLING BOTTLES; 250 ml

- microbiology (autoclavable); 7 pcs
- physico-chemistry; 7 pcs

SINGLE-USE THIO SAMPLING BAGS; 115 ml:

- microbiology; 25 pcs
- physico-chemistry; 25 pcs

**WATER SAMPLE COOLER BAG; 1 pc**

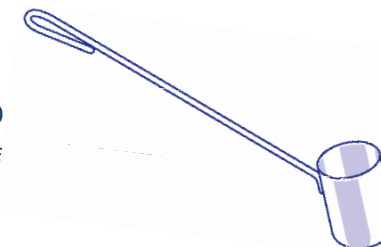
- 25 x 20 x 6 cm (L x W x H)

WASTE CONTAINERS; 4 L each

- for biohazard waste; 1 pc
- for chemical waste; 1 pc
- autoclavable
- wide neck

**WATER SAMPLER; 300**

- pharmaceutical-grade



3. MICROBIOLOGICAL TESTING EQUIPMENT

3.1 LETZTEST PORTABLE MEMBRANE FILTRATION KIT



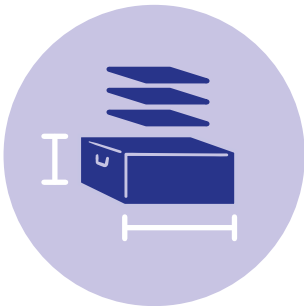
Quantifies *E. coli* and other coliforms following DIN EN ISO 9308-1. It also allows quantification of other fecal indicator bacteria per 100 mL of water sample.

The presence of fecal bacteria in water is a clear indication of contamination from human or animal excrement, which carries a high risk of pathogenic microorganisms causing severe waterborne diseases (e.g. Cholera). Monitoring fecal indicator bacteria is crucial to ensure safe drinking water and safeguard public health.

According to the World Health Organization (WHO) drinking water guidelines, safe water must not contain any *E. coli* or other fecal indicator bacteria. (Reference: *WHO Guidelines for drinking-water quality*, Fourth Edition, 2017)



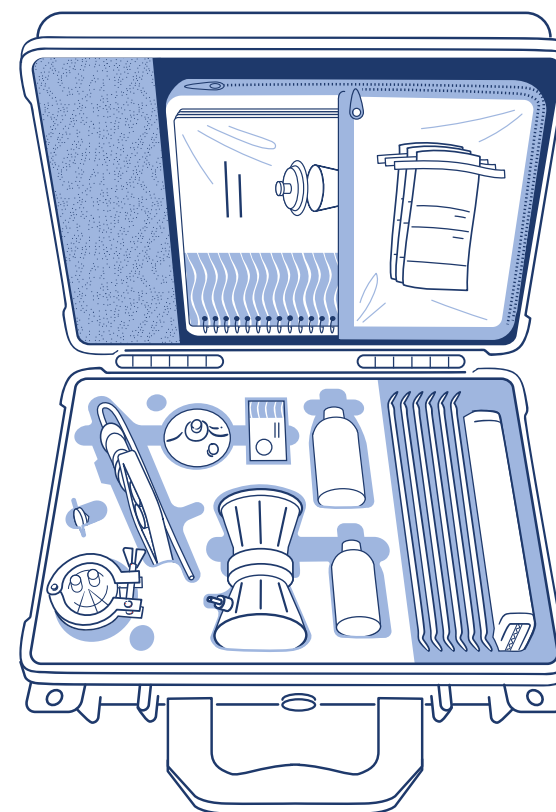
SPECIFICATIONS



| PRODUCT NAME | LETZTEST PORTABLE MEMBRANE FILTRATION KIT |
|----------------------------|--|
| Article Number | 115433 (EN); 118193 (FR); 1155 (AR); 118297 (ES) |
| Purpose | For microbiological analysis in water, beverage, and pharmaceutical applications |
| Form | Hard-shell case |
| Material | Robust polymer |
| Dimensions | 450 × 360 × 175 mm (L × W × H) |
| Weight | 8.6 kg |
| Waterproof Rating | IP68 |
| Testing Equipment Material | Pharmaceutical-grade stainless steel (1.4404) |
| Filtration Unit | 1-branch manifold, stand-alone |
| Filtration Volume | 100 mL graduated |
| Sterilisation | Flame, autoclave or other |
| Filter Compatibility | Standard membrane filtration filters for microbiological analysis, Ø 47 mm or 50 mm; pore sizes 0.2 µm or 0.45 µm (cellulose nitrate or other polymers) |
| Sealing-Ring | Heat-resistant EPDM clamp seal |
| Detection Limit | 1 CFU / 100 mL (DIN EN ISO 9308-1) |
| Suggested Culture Media | Compact Dry dehydrated culture plates or other ready-to-use chromogenic media (e.g., Sartorius Stedim Biotech Nutrient Pad Sets, Lauryl Sulphate Broth Sets, and more). Also compatible with reusable or self-prepared Petri dishes for maximum flexibility. |
| Incubation | Typically 24h at 37°C for chromogenic media plates |
| Power Source | Not required |
| Country of Origin | Germany |

CONTENT

| ITEM | DESCRIPTION / DETAILS | QTY. |
|---|--|---------|
| Instruction Manual | Easy-to-understand, illustrated, waterproof, and rewritable | 1 pc |
| Membrane Filtration Unit | Stainless steel | 1 pc |
| Portable Laboratory Table | Stainless steel | 1 pc |
| Manual Vacuum Pump | Made of highly robust polymer; 6 mm tubing connector with pharmaceutical-grade silicone vacuum tubing (inner Ø 6 mm). Maintains vacuum via integrated check valve; easy to operate, and any ingressed water can be easily removed. | 1 pc |
| Spray Bottle | 250 mL (for sterile water) | 1 pc |
| Bottle (Ethanol) | 100 mL (for ethanol > 70%) | 1 pc |
| Multi-Purpose Bottle | Stainless steel (for additional volume after filtration) | 1 pc |
| Laboratory Alcohol Candle | Stainless steel | 1 pc |
| Container for Sterile Water | Stainless steel | 1 pc |
| Ethanol Container | Stainless steel | 1 pc |
| Measuring Spoon | 1 mL, stainless steel | 1 pc |
| Tweezers | Flat-headed, stainless steel | 1 pc |
| Waterproof Pen | To write on bin card or Petri Dishes (Compact Dry) | 1 pc |
| Membrane Filters | Standard membranes | 100 pcs |
| Dehydrated Culture Plates (E. coli and other Coliforms) | Compact Dry plates | 32 pcs |
| Thio Sampling Bags | 115 mL, pre-sterilised, with thiosulphate tablet | 25 pcs |
| Spare Parts Bag | • Spare valves for manual vacuum pump; 2 pcs • EPDM seal ring for membrane filtration unit; 1 pc | 1 pc |



3.2 LETZTEST ELECTRICITY-FREE INCUBATOR



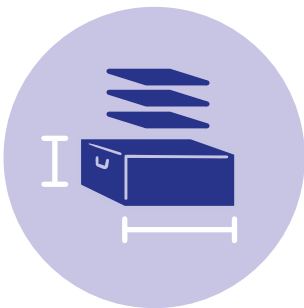
Thermal 37 °C electricity-free incubator for microbiological analysis (patent office protected).

The lightweight, compact incubator operates without batteries or an external power supply, providing a reliable way to test water quality in off-grid locations and areas with unstable power.

Together with the LETZTEST Membrane Filtration Kit and the LETZTEST Water Sampler this incubator forms a complete portable laboratory for microbiological testing.

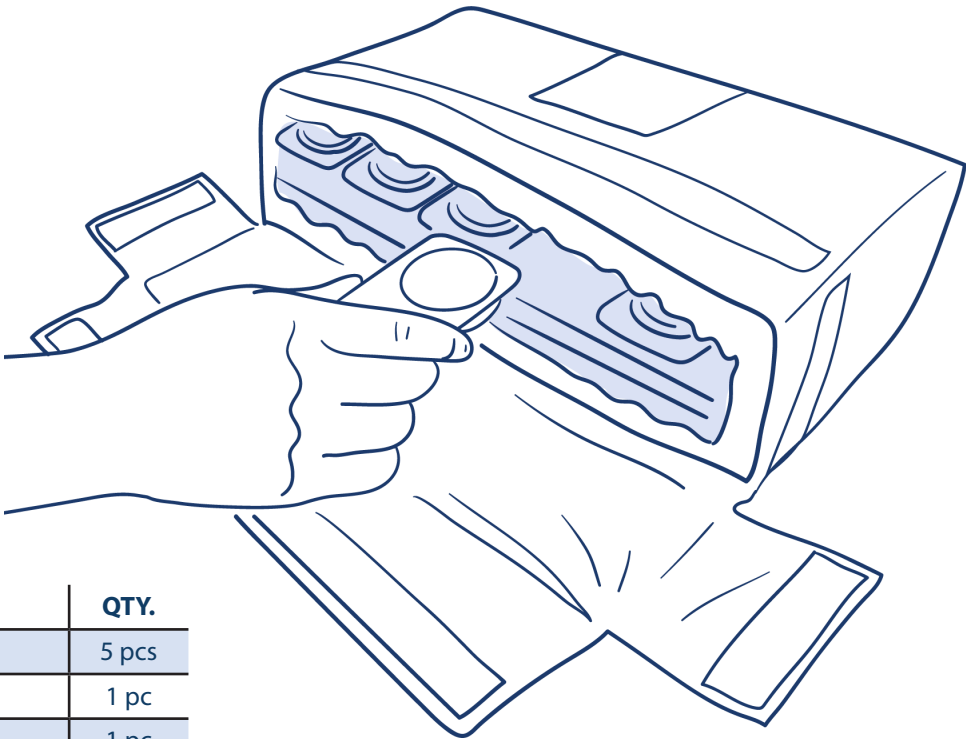


SPECIFICATIONS



| PRODUCT NAME | LETZTEST ELECTRICITY-FREE INCUBATOR, SIZE M |
|-------------------|--|
| Article Number | 115178 |
| Purpose | Incubation of microbiological water samples at 37 °C without electricity |
| Form | Insulated incubation bag with various carrying straps |
| Material | Made of fibreglass and aluminium |
| Dimensions | 400 x 300 x 130 mm (L x W x H) |
| Weight | 4.5 kg |
| Function | Use together with LETZETST Portable Membrane Filtration Kit for microbiological analysis in water, beverage, and pharmaceutical applications |
| Temperature | 37°C +/- 0.2°C, > 24 h |
| Capacity | For example, 25 LETZTEST Tubes or 40 Petri Dishes (CompactDry) |
| Power Source | No mains power required. Heating plates can be activated using direct sunlight, hot water, an oven, or a 12 V heating mat (attachable to a car battery). After activation, the incubator maintains a stable temperature of 37 °C for up to 30 hours. |
| Country of Origin | Germany |

CONTENT



| ITEM | DESCRIPTION / DETAILS | QTY. |
|-----------------------------|--|-------|
| Thermal Heating Plates | For thermal incubation | 5 pcs |
| Digital Temperature Logger | With smartphone app for temperature monitoring | 1 pc |
| Analog Thermometer | For manual temperature verification | 1 pc |
| Waterproof Activation Bag | For optional activation using hot water | 1 pc |
| 12 V Waterproof Heating Mat | For optional electrical activation via car battery | 1 pc |
| User Manual | Sewn onto the incubator in a waterproof manner | 1 pc |

4. PHYSICO-CHEMICAL TESTING EQUIPMENT

4.1 LETZTEST PHOTOMETER KIT



Detect over 140 physico-chemical parameters in water samples with the LETZTEST Photometer Kit combined into one compact, precise device. 18 LEDs ensure exceptional testing precision. The intuitive, smartphone-like device, with multilingual support, ensures convenient and simple operation. Easily mark and find sampling points with QR codes.

Backed by a unique, free cloud software solution for seamless management of your measurement data. Even capture data offline and sync safely once reconnected to Wi-Fi. Use the cloud for advanced analytics, set ranges, visualize results, generate reports, and manage multiple devices. Rely on a USB-rechargeable, longlasting battery.



The LETZTEST Photometer Kit offers the capability to add additional equipment such as pH and conductivity probes as well as COD measurement hardware. Transforming your photometer into a COD Analyzer (with Heating Block) or a Multimeter (with ProbeBox). Found under **'Consumables & Add-ons'**



SPECIFICATIONS



| PRODUCT NAME | LETZTEST PHOTOMETER KIT |
|--------------------------|--|
| Article Number | 1166 |
| Purpose | Photometric analysis of physico-chemical water parameters |
| Form | Hard shell carrying case |
| Material | Robust polymer |
| Dimensions | 32 x 381 x 191 mm (L x W x H) |
| Weight | 2.5 kg |
| Spectral Range | 390–950 nm (parallel reading) |
| Wavelengths (18 peaks) | 410, 435, 460, 485, 510, 535, 560, 585, 610, 645, 680, 705, 730, 760, 810, 860, 900, 940 nm |
| Optical Setup | 180° & 90° (direct/indirect measurement) |
| Photometric Accuracy | ±2 % FS (at 25 °C) |
| Testing Parameters | >140 (flexible setup; found under ' Consumables & Add-ons ') |
| Electrode Interface | USB-C connector for ProbeBOX 1.0 |
| Data Management Software | Easy Data Transfer to LabCOM® Software (Windows/Mac), LabCOM® App (Android/iOS), LabCOM® Cloud |
| Connectivity (Technical) | Bluetooth® 4.2, WiFi, USB-C, 4G* |
| Offline usability | Yes, including automatic data upload when reconnected |
| Built-in data logging | Internal Memory >150,000 measurements |
| Display | 5.5" Colour HD Touchscreen |
| Camera | Integrated QR-Code Scanner for easy sampling site identification |
| Calibration | Auto-calibration with certificate sent to your e-mail (software); calibrated for LETZTEST reagents |
| Menu Guidance | 4-button intuitive interface with illustrated on-screen instructions |
| Power Supply | 8,400 mAh Li-Ion battery |
| Charging Method | Via AC Adapter / USB-C |
| AC Adapter Input | 100–240 V AC, 50/60 Hz, 0.3 A |
| Charging Time | 4–8 hours (0–100 %) |

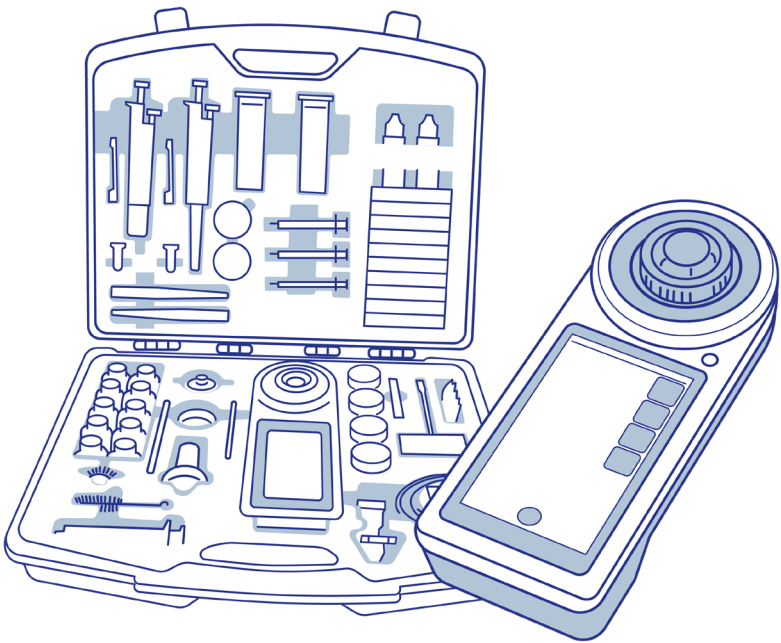
SPECIFICATIONS



| | |
|---|---|
| Languages | >15 |
| Operating Conditions | 5 °C – 45 °C / 30–90 % RH |
| Waterproof Rating | Photometer Kit IP68; Photometer itself IP 54 (splash-waterproof) |
| WiFi Frequency | 2.4 GHz & 5 GHz |
| Transmit Power | Max. 16 dBm |
| Pre-Activated Parameters (additional parameters can be easily activated for you upon request) | Alkalinity-M / 5 - 200 mg/l / tablet / Resolution 1 Aluminium / 0 - 0.3 mg/l / tablet / Resolution 0.01 Ammonia (LR) / 0 - 1 mg/l / powder / Resolution 0.01 Arsenic (coming soon) Chloride / 0.5 - 25 mg/l / tablet / Resolution 0.1 Chlorine (free-combined-total) / 0.00 - 8.00 mg/l / tablet / Resolution 0.01 Colour (Hazen/APHA) / 15 – 500 mg/l / Resolution 1 Copper / 0 - 5 mg/l / tablet / Resolution 0.01 Fluoride (SPADNS) / 0 - 2 mg/l / liquid / Resolution 0.01 Hardness-Total (LR/HR) / 2(20) - 50(500) mg/l / tablet / Resolution 1 Iron (LR) / 0 - 1 mg/l / tablet / Resolution 0.01 Lead (coming soon) Manganese (LR) / 0.2 - 5 mg/l / powder / Resolution 0.1 Nitrate (HR) / 1 - 100 1 mg/l / powder / Resolution 1 Nitrite (LR) / 0 - 0.5 mg/l / powder / Resolution 0.01 Phosphate-ortho (LR) / 0 - 4 mg/l / tablet + powder / Resolution 0.01 Sulphate / 5 - 100 mg/l / powder / Resolution 1 Suspended Solids / 0 - 750 mg/l / Resolution 1 Turbidity / 0.5 - 1000 mg/l (NTU) / Adapter / Resolution 0.01 |

CONTENT

| ITEM | DESCRIPTION / DETAILS | QTY. |
|-------------------------------|--|--------|
| Photometer | Digital Photometer for benchtop and mobile applications | 1 pc |
| Glass Vials | 24 mm / 10 mL glass vials with integrated light-shield lids | 10 pcs |
| Light Shield | For 16 mm and 1 mL vials, and check standards | 1 pc |
| 24 mm Vial Adapter | Built-in, exchangeable | 1 pc |
| Stirring Rods | 10.5 cm | 2 pcs |
| Shaker | 25 mL capacity | 1 pc |
| Plastic Syringe | 10 mL; graduated | 1 pc |
| Plastic Syringe | 3 mL; raduated | 2 pcs |
| Professional Lab Pipette | Adjustable 1–10 mL, with 2 tips | 1 set |
| Bulb Pipettes | 2 mL | 2 pcs |
| Pipetting Balls | For 2 mL bulb pipettes | 2 pcs |
| NTU Turbidity Calibration Kit | Sealed glass vials (0.5 / 10 / 1000 NTU) | 1 set |
| Vial Cleaning Brushes | — | 3 pcs |
| Microfibre Cleaning Cloth | For vials | 1 pc |
| Charger Set | USB Type-C charger, EU type F to UK type G plug. AC Adapter Input 100–240 V AC, 50/60 Hz, 0.3 A | 1 set |
| User Manual | Printed, ring-binder format | 1 pc |



4.2 LETZTEST PROBE BOX KIT



When connected to the LETZTEST Photometer, the ProbeBox enables the integration of various test probes—such as pH, EC, TDS, ORP, and temperature—transforming the photometer into a versatile multimeter.

Connection is established using a USB-Type C cable along with an A/D exchange box link. When the probes are connected to the photometer, it effectively controls the probe, capturing measurements that can be saved under user-defined sampling points and synchronized with the LabCOM-Cloud of the photometer.

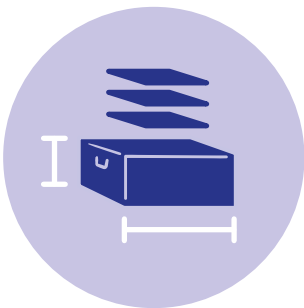
The standard LETZTEST ProbeBox Kit includes a pH electrode and a conductivity electrode, both with durable plastic bodies. Designed for general laboratory and field use, these electrodes provide reliable measurements for pH, conductivity, TDS, and salinity in water solutions. Ideal for research, environmental monitoring, and quality control applications.

The LETZTEST ProbeBox Kit offers the capability to add multiple pH, conductivity and ORP probes. Found under **'Consumables & Add-ons'**



SPECIFICATIONS

 The following specifications refer to the product as delivered in the standard starter-set.

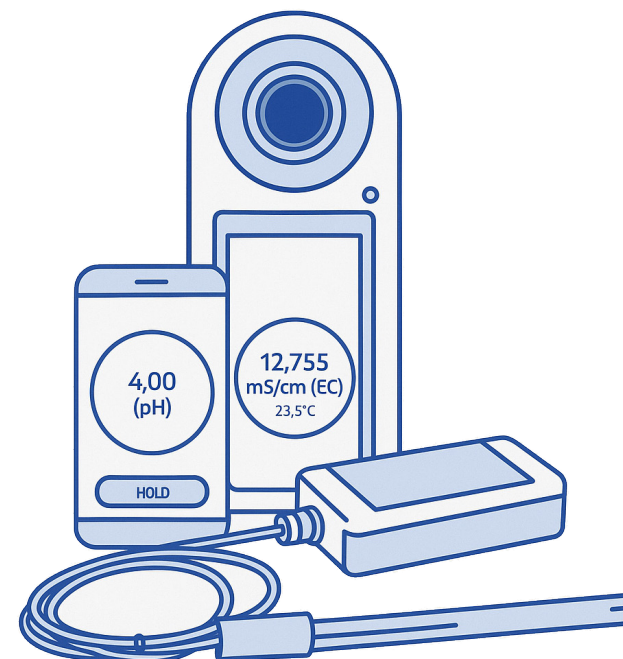


| | |
|--------------------------|--|
| Product Name | LETZTEST ProbeBox Kit |
| Article Number | 1223 |
| Purpose | Probes can be connected directly to the Photometer to measure pH, conductivity, and temperature. The measurement data are automatically recorded in the cloud, eliminating the need for an additional multimeter and allowing all physico-chemical parameters to be measured with a single device. |
| Form | Grey carrying case |
| Material | Robust polymer with precision foam insert |
| Dimensions | 360 x 300 x 80 mm (L x W x H) |
| Weight | 1.5 kg |
| Application | Designed for measurement in general aqueous solutions for laboratory and field use in scientific research, environmental monitoring, and quality control |
| Electrode Specifications | <ul style="list-style-type: none">• pH Electrode: pH Range: 0 – 14; Temp. Range: 0 – 80 °C; Non-refillable• Conductivity Electrode: Conductivity Range: 0 – 200 mS/cm (K = 1.0); TDS Range: 0 – 100 g/L; Temp. Range: 0 – 50 °C |
| Connector Type | 8-pin BNC plug with integrated IC |
| Cable Length | 1 m |
| Interface | A/D converter box with BNC input and USB Type-C output |
| Compatibility | Fully compatible with LETZTEST Photometer |
| Power Source | Powered via USB Type-C connection to Photometer |

CONTENT

| ITEM | DESCRIPTION / DETAILS | QTY. |
|---------------------------------|--|------|
| pH Electrode | Plastic-body pH electrode for general aqueous solutions; ideal for laboratory and field applications; 8-pin BNC plug with IC, 1 m cable | 1 pc |
| EC Electrode | Plastic-body conductivity electrode, designed for high accuracy across a wide range of conductivity measurements (0 to 200 mS/cm), with a cell constant of $K = 1.0$. | 1 pc |
| A/D Converter Box | BNC input and USB Type-C output for connection to LETZ-TEST Photometer | 1 pc |
| USB Cable | Type-C to Type-C | 1 pc |
| KCl Protection Solution | 10 mL dropper bottle, 3 mol/L KCl electrode storage solution | 1 pc |
| Calibration Solution – pH 4.01 | 20 mL sachet | 1 pc |
| Calibration Solution – pH 7.00 | 20 mL sachet | 1 pc |
| Calibration Solution – pH 10.01 | 20 mL sachet | 1 pc |
| User Manual | Printed instructions | 1 pc |

| IN SAPARATE CARTON BOX | | |
|--|--|-------|
| Calibration & Maintenance Solution Set | Includes the following standard items: <ul style="list-style-type: none"> • Electrolyte Solution “KCl 3 mol/L”, 100 mL bottle • “EC 1413 $\mu\text{S}/\text{cm}$” calibration solution, 100 mL bottle • “EC 12.88 mS/cm” calibration solution, 100 mL bottle • “pH 4.00” calibration solution, 100 mL bottle • “pH 7.00” calibration solution, 100 mL bottle • “pH 10.00” calibration solution, 100 mL bottle | 1 set |



5. CONSUMABLES & ADD-ON EQUIPMENT

5.1 FOR MICROBIOLOGICAL TESTING EQUIPMENT

 These are included in the standard starter-set

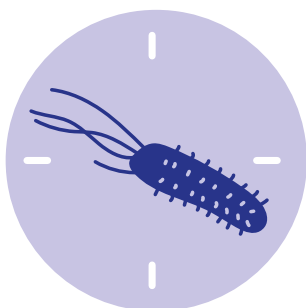
 These are available as optional extensions

CONSUMABLES FOR LETZTEST PORTABLE MEMBRANE FILTRATION KIT

| ART. NO. | DESCRIPTION | QUANTITY |
|----------|--|---------------|
| 115177 | Compact Dry Plate – E. coli & other coliforms, package of 4 pcs (sterile packed) | for 300 tests |
| 114930 | Filtration Membranes, package of 100 pcs | for 300 tests |
| 114928 | Thio-Sampling Bags – 100 mL, package of 25 pcs | 1 pkg |
| — | Compact Dry Plate – E. coli only, package of 4 pcs (sterile packed) | |
| — | Compact Dry Plate – Enterococci, package of 4 pcs (sterile packed) | |
| — | Compact Dry Plate – Enterobacteriaceae, package of 4 pcs (sterile packed) | |
| — | Compact Dry Plate – Pseudomonas aeruginosa, package of 4 pcs (sterile packed) | |
| — | Compact Dry Plate – Heterotrophic bacteria in water, package of 4 pcs (sterile packed) | |
| — | Compact Dry Plate – Listeria monocytogenes, package of 4 pcs (sterile packed) | |
| — | Dry ChroMedium Coliform Agar – 500 g (dry powder) to pour your own; for use with reusable Petri Dishes | |

OPTIONAL ADD-ON EQUIPMENT

| ART. NO. | DESCRIPTION | QUANTITY |
|----------|---|----------|
| — | LETZTEST Membrane Filtration Unit | |
| — | LETZTEST Hand Vacuum Pump | |
| — | LETZTEST Tweezers, flat-headed, stainless steel | |
| — | LETZTEST Measuring Spoon, 1 mL, stainless steel | |
| — | PowerJet2 Laboratory Gas Burner (Mobile Option) – Connect to central gas supply or operate mobile using Camping Gaz CV360 or Express 444 cartridges (with adapters). Made in Germany. Flame temperature: 1350 °C (liquid gas) / 1300 °C (natural gas E). Power: 1.7 kW (liquid gas) / 1.0 kW (natural gas). Dimensions: 150 mm (W) × 210 mm (H). Weight: 500 g. Includes: instruction manual, stainless steel stand, box spanner, wrenches (15 mm & 17 mm), gas connector, nozzles for natural & butane/propane gas, 2 m gas tubing | |
| — | Reusable Glass Petri Dishes (Set of 18) – Size: 60 × 15 mm; material: soda-lime glass; autoclavable; sterilizable at 120 °C (oven or pressure cooker) | |



5.2 FOR PHYSICO-CHEMICAL TESTING EQUIPMENT

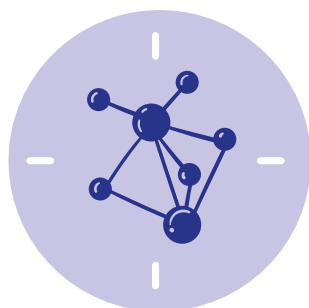
 These are included in the standard starter-set

 These are available as optional extensions

CONSUMABLES FOR LETZTEST PHOTOMETER KIT

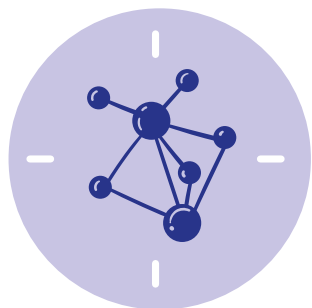
| ART. NO. | PARAMETER | MEASUREMENT RANGE | QUANTITY |
|----------|------------------------------------|-------------------|---------------|
| — | Active Oxygen | 0 – 40 mg/L | — |
| 1180 | Alkalinity–M | 5 – 200 mg/L | for 300 tests |
| — | Alkalinity–M (HR) | 0 – 500 mg/L | — |
| — | Alkalinity–P | 25 – 300 mg/L | — |
| 1176 | Aluminium | 0 – 0.3 mg/L | for 300 tests |
| 1175 | Ammonia | 0 – 1 mg/L | for 300 tests |
| — | Ammonia (HR) | 1 – 50 mg/L | — |
| 1242 | Arsenic | Coming soon | * |
| — | Boron | 0 – 2 mg/L | — |
| — | Bromine | 0 – 18 mg/L | — |
| — | Bromine (LR) | 0 – 4.5 mg/L | — |
| — | Carbohydrazide | 0 – 1.3 mg/L | — |
| — | Chloramines | 0.00 – 8.00 mg/L | — |
| — | Chloride | 0 – 100 mg/L | — |
| 1187 | Chloride (LR) | 0.5 – 25 mg/L | for 300 tests |
| — | Chloride in Methanol | 0 – 20 mg/L | — |
| 1167 | Chlorine (Free / Combined / Total) | 0.00 – 8.00 mg/L | for 300 tests |
| — | Chlorine (HR) | 0 – 200 mg/L | — |
| — | Chlorine (MR) | 0.00 – 10.00 mg/L | — |
| — | Chlorine Dioxide | 0 – 15 mg/L | — |
| — | Chlorine Dioxide (LR) | 0 – 5 mg/L | — |
| — | Chlorite | 0 – 8 mg/L | — |
| — | Chromium (LR) | 0 – 1 mg/L | — |

* Individual Test Kit "Arsenic Quick II Econo" (300 tests) included until release



These are included in the standard starter-set

These are available as optional extensions



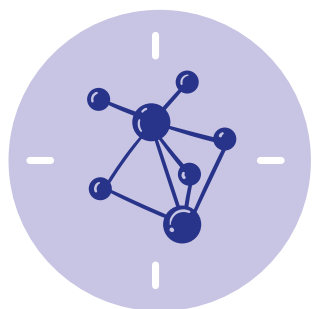
CONSUMABLES FOR LETZTEST PHOTOMETER KIT

| ART. NO. | PARAMETER | MEASUREMENT RANGE | QUANTITY |
|----------|--------------------------------|-------------------|---------------------|
| — | Chromium (MR) | 0 – 2.2 mg/L | — |
| — | COD (HR) | 0 – 15000 mg/L | — |
| — | COD (LR) | 0 – 150 mg/L | — |
| — | COD (MR) | 0 – 1500 mg/L | — |
| N/A | Colour (Hazen/APHA) | 15 – 500 mg/L | no reagent required |
| 1182 | Copper | 0.0 – 5.0 mg/L | for 300 tests |
| — | Cyanide | 0.01 – 0.50 mg/L | — |
| — | Cyanuric Acid | 2 – 160 mg/L | — |
| — | DBNPA | 0 – 13 mg/L | — |
| — | DEHA | 20 – 1000 µg/L | — |
| — | DEWAN-50 | 0 – 300 mg/L | — |
| — | Dissolved Oxygen | 0 – 10 mg/L | — |
| — | Erythorbic Acid | 0 – 3.5 mg/L | — |
| — | Fluorescein | 0 – 500 µg/L | — |
| 1219 | Fluoride (SPADNS Test Reagent) | 0 – 2 mg/L | for 300 tests |
| — | Hardness–Calcium | 0 – 500 mg/L | — |
| — | Hardness–Calcium (HR) | 50 – 1000 mg/L | — |
| 1181 | Hardness–Total (HR) | 0 – 500 mg/L | for 300 tests |
| — | Hardness–Total (LR) | 2 – 50 mg/L | — |
| — | Hydrazine | 5 – 600 µg/L | — |
| — | Hydrocarbons in Methanol | yes / no | — |
| — | Hydrogen Peroxide (HR) | 0 – 200 mg/L | — |
| — | Hydrogen Peroxide (LR) | 0 – 3.8 mg/L | — |



These are included in the standard starter-set

These are available as optional extensions



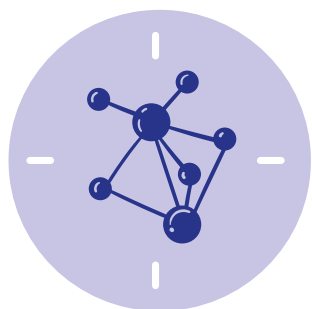
CONSUMABLES FOR LETZTEST PHOTOMETER KIT

| ART. NO. | PARAMETER | MEASUREMENT RANGE | QUANTITY |
|----------|---------------------|--------------------------|---------------|
| — | Hydroquinone | 0 – 2.5 mg/L | — |
| — | Iodine | 0 – 28 mg/L | — |
| — | Iron (HR) | 0 – 30 mg/L | — |
| 1170 | Iron (LR) | 0 – 1 mg/L | for 300 tests |
| — | Iron (MR) | 0 – 10 mg/L | — |
| — | Iron (MR, Ferrous) | 0 – 10 mg/L | — |
| — | Iron (Total) | 0 – 3 mg/L | — |
| — | Iron in Oil | 20 – 450 mg/L | — |
| — | Isothiazolinone | 0.0 – 10.0 mg/L | — |
| — | Lead | Coming soon | — |
| — | Legionella | 60 – 10 ⁶ cfu | — |
| — | Magnesium | 0 – 100 mg/L | — |
| 1174 | Manganese (LR) | 0.2 – 5 mg/L | for 300 tests |
| — | Manganese (VLR) | 0 – 0.030 mg/L | — |
| — | Methylethylketoxime | 0 – 4.1 mg/L | — |
| — | Molybdate | 1 – 100 mg/L | — |
| — | Molybdate (HR) | 0 – 40 mg/L | — |
| — | Molybdate (HR) | 5 – 200 mg/L | — |
| — | Molybdate (LR) | 0 – 15 mg/L | — |
| — | Nickel (HR) | 0 – 7 mg/L | — |
| — | Nickel (HR) | 0 – 10 mg/L | — |
| 1169 | Nitrate | 1 – 100 mg/L | for 300 tests |
| 1173 | Nitrite | 0 – 0.50 mg/L | for 300 tests |



 These are included in the standard starter-set

 These are available as optional extensions



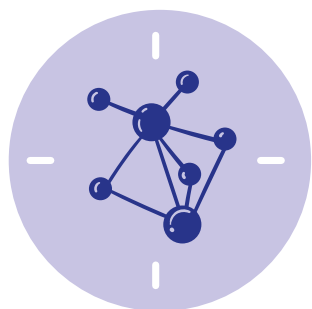
CONSUMABLES FOR LETZTEST PHOTOMETER KIT

| ART. NO. | PARAMETER | MEASUREMENT RANGE | QUANTITY |
|----------|-----------------------------------|-------------------|---------------|
| — | Nitrite (HR) | 0 – 1500 mg/L | — |
| — | Nitrite (HR) | 0 – 3000 mg/L | — |
| — | Nitrite (HR) | 5 – 200 mg/L | — |
| — | Nitrogen–Total (HR) | 5 – 150 mg/L | — |
| — | Nitrogen–Total (LR) | 0.5 – 25 mg/L | — |
| — | Ozone | 0 – 5.4 mg/L | — |
| — | Peracetic Acid (HR) | 0 – 300 mg/L | — |
| — | Peracetic Acid (LR) | 0.00 – 10.00 mg/L | — |
| — | Permanganate Time Test (Methanol) | 0 – 100 %T | — |
| — | pH–Universal | 4 – 11 pH | — |
| — | pH–Universal | 5 – 11 pH | — |
| — | pH–Value (LR) | 5.2 – 6.8 pH | — |
| — | pH–Value (MR) | 6.4 – 8.4 pH | — |
| — | pH–Value (MR) | 6.5 – 8.4 pH | — |
| — | PHMB | 2 – 60 mg/L | — |
| — | Phenol | 0 – 5 mg/L | — |
| 1188 | Phosphate (LR) | 0.00 – 4.00 mg/L | for 300 tests |
| — | Phosphate–Ortho (HR) | 0 – 100 mg/L | — |
| — | Phosphate–Ortho (HR) | 0 – 80 mg/L | — |
| — | Phosphonate | 0 – 20 mg/L | — |
| — | Phosphorus–Total (HR) | 0 – 52 mg/L | — |
| — | Phosphorus–Total (LR) | 0 – 2.6 mg/L | — |



These are included in the standard starter-set


These are available as optional extensions




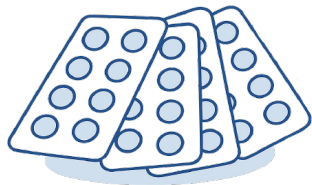
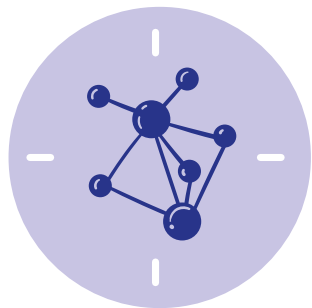
CONSUMABLES FOR LETZTEST PHOTOMETER KIT

| ART. NO. | PARAMETER | MEASUREMENT RANGE | QUANTITY |
|----------|---------------------------|-------------------|---------------------|
| — | Polyacrylate | 1 – 30 mg/L | — |
| — | Potassium | 0.7 – 12 mg/L | — |
| — | PTSA | 0 – 1000 µg/L | — |
| — | QAC | 25 – 150 mg/L | — |
| 1167 | Residual Chlorine | 0 – 5.00 mg/L | for 300 tests |
| — | Sanosil | 0 – 400 mg/L | — |
| — | Silica (HR) | 0 – 100 mg/L | — |
| — | Silica (LR) | 0 – 5 mg/L | — |
| — | Sodium Hypochlorite | 0.2 – 40 % | — |
| 1226 | Sulphate | 5 – 100 mg/L | for 300 tests |
| — | Sulphide | 0.04 – 0.5 mg/L | — |
| — | Sulphide (Alt.) | 0 – 0.7 mg/L | — |
| — | Sulphite (HR) | 0 – 200 mg/L | — |
| — | Sulphite (HR) | 0 – 300 mg/L | — |
| — | Sulphite (LR) | 0 – 10 mg/L | — |
| N/A | Suspended Solids | 0 – 750 mg/L | no reagent required |
| — | Tannic Acid | 0 – 150 mg/L | — |
| 1181 | Total Hardness | 0 – 500 mg/L | for 300 tests |
| — | Total Oxidant | 0 – 4 mg/L | — |
| — | Tracer | 0 – 1000 µg/L | — |
| — | Transmission / Absorption | 0 – 100 % | — |
| — | Turbidity (FAU) | 20 – 1000 FAU | — |
| N/A | Turbidity (NTU) | 0.5 – 1100 NTU | no reagent required |



 These are included in the standard starter-set

 These are available as optional extentions

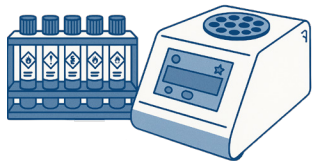


CONSUMABLES FOR LETZTEST PHOTOMETER KIT

| ART. NO. | PARAMETER | MEASUREMENT RANGE | QUANTITY |
|----------|----------------|-------------------|----------|
| — | Urea (LR) | 0.1 – 2.5 mg/L | — |
| — | Urea (HR) | 0.2 – 5.0 mg/L | — |
| — | Watch Products | 0 – 1000 µg/L | — |
| — | Zinc | 0 – 1 mg/L | — |

OPTIONAL ADD-ON EQUIPMENT FOR LETZTEST PHOTOMETER KIT

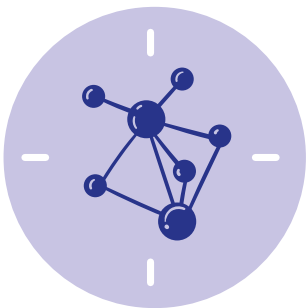
| ART. NO. | PARAMETER | DESCRIPTION |
|----------|-----------|--|
| — | COD | Heat block for 12 × 16 mm vials. Temperatures: 70, 100, 120, 148, 150, 160 °C & user-defined. Heating times: 30, 60, 90, 120 min. 200–240 VAC, 50 Hz. Max 350 W. |
| — | COD | LETZTEST Photometer adapter to use 16 mm glass vials. |
| — | COD | Aluminium test-tube rack for holding 12 × 16 mm glass cuvettes. |



5.2 FOR PHYSICO-CHEMICAL TESTING EQUIPMENT

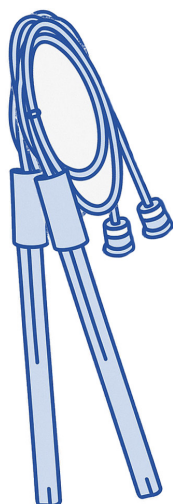
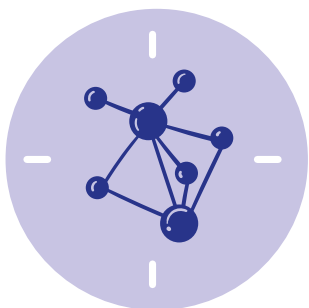
These are included in the standard starter-set

These are available as optional extentions



CONSUMABLES FOR LETZTEST PROBEBOX KIT

| ART. NO. | DESCRIPTION | QUANTITY |
|----------|--|----------|
| 1243 | ProbeBOX Electrolyte Solution "KCl 3 mol/L" (for pH probe storage) | 100 mL |
| — | Electrolyte Solution "KCl 3 mol/L" | 500 mL |
| — | Electrolyte Solution "KCl 3 mol/L" | 1000 mL |
| 1244 | ProbeBOX Buffer "EC 1413 µS/cm" calibration solution (EC/TDS) | 100 mL |
| — | ProbeBOX Buffer "EC 1413 µS/cm" calibration solution (EC/TDS) | 500 mL |
| — | ProbeBOX Buffer "EC 1413 µS/cm" calibration solution (EC/TDS) | 1000 mL |
| 1245 | ProbeBOX Buffer "EC 12.88 mS/cm" calibration solution (EC/TDS) | 100 mL |
| — | ProbeBOX Buffer "EC 12.88 mS/cm" calibration solution (EC/TDS) | 500 mL |
| — | ProbeBOX Buffer "EC 12.88 mS/cm" calibration solution (EC/TDS) | 1000 mL |
| 1246 | ProbeBOX Buffer "pH 4.00" calibration solution | 100 mL |
| — | ProbeBOX Buffer "pH 4.00" calibration solution | 500 mL |
| — | ProbeBOX Buffer "pH 4.00" calibration solution | 1000 mL |
| 1247 | ProbeBOX Buffer "pH 7.00" calibration solution | 100 mL |
| — | ProbeBOX Buffer "pH 7.00" calibration solution | 500 mL |
| — | ProbeBOX Buffer "pH 7.00" calibration solution | 1000 mL |
| 1248 | ProbeBOX Buffer "pH 10.00" calibration solution | 100 mL |
| — | ProbeBOX Buffer "pH 10.00" calibration solution | 500 mL |
| — | ProbeBOX Buffer "pH 10.00" calibration solution | 1000 mL |



OPTIONAL ADD-ON EQUIPMENT FOR LETZTEST PROBEBOX KIT

| ART. NO. | PARAMETER | DESCRIPTION | TEMP. RANGE | RANGE | RESOLUTION |
|----------|-----------|--|----------------|---|------------|
| — | pH | Plastic Body pH Electrode; general water solutions; non-refillable. | 0 – 80 °C ATC | pH 0 – 14 | 0.01 |
| — | pH | Routine Sealed Glass Body pH Electrode; general water solutions; non-refillable. | 0 – 80 °C ATC | pH 0 – 14 | 0.01 |
| — | pH | Refillable Glass pH Electrode; TRIS-buffer compatible; up to 100 °C. | 5 – 100 °C ATC | pH 0 – 14 | 0.01 |
| — | ORP | Plastic Body ORP Electrode; gel reference; no temperature reading. | 0 – 80 °C | ±2000 mV | 1 mV |
| — | EC, TDS | Glass Body – Pure Water Conductivity Electrode (K = 0.1); 7×18 mm platinum. | — | 0 – 200 µS/cm; 0 – 100 mg/L (0 – 100 ppm)* | 1 µS/cm |
| — | EC, TDS | Glass Body – Conductivity Electrode (K = 1.0); 5×7 mm platinum plate / 2-pole. | 0 – 50 °C ATC | 0 – 200 mS/cm; 0 – 100 g/L (0 – 100 ppt)* | 1 µS/cm |
| — | EC, TDS | Plastic Body – Conductivity Electrode (K = 1.0); wide-range, high accuracy. | 0 – 50 °C ATC | 0 – 200 mS/cm; 0 – 100 g/L (0 – 100 ppt)* | 1 µS/cm |
| — | EC, TDS | Plastic Body – Conductivity Electrode (K = 10); 5×5 mm platinum ring / 2-pole. | 0 – 50 °C ATC | 20 – 2000 mS/cm; 10 – 1000 g/L (10 – 1000 ppt)* | 1 µS/cm |

6. GENERAL INFORMATION

6.1 SPECIAL ADVANTAGES



ALL-IN-ONE SOLUTION

All You need in one Box.
Test anywhere, anytime.
Easy and independent.



LONG-TERM

Designed for long-term operation.
Unlike emergency relief field kits.



ROBUSTNESS

Highest hardware robustness.
100% made in Germany.



STUDY-PROVEN EFFICIENCY

70% increase in lab efficiency.
Field-proven by independent
evaluation.



6.2 SUPPORT

FIND QR-CODE IN THE PRODUCT THAT LEADS TO...



PRE-RECORDED VIDEO-TUTORIALS



DIRECT WHATSAPP SUPPORT CHAT
WITH LETZTEST TECHNICAL STAFF



ONLINE SUPPORT TRAINING
WITH LETZTEST TECHNICAL STAFF



6.3 CONTACT



LETZTEST

Gottfried-Hagen Str. 60-62
51105 Cologne
Germany

| | |
|---------|--|
| WEBSITE | www.letztest.com |
| E-MAIL | info@letztest.com |
| PHONE | +49 (0) 221 / 560 909 04 |



WHATSAPP

| | |
|-------------------|---------------------------|
| TECHNICAL ADVISOR | +49 (0) 156 / 78 85 01 03 |
| SALES ADVISOR | +49 (0) 157 / 896 275 36 |